

University Larbi Ben M'hidi Oum El Bouaghi
Institute of Urban Technique Management
Department of Urban Technique Management



English course

License L2 Genie Urbain / SEMESTRE 1

Dr. Benacer Hamza

[benacer.hamza@univ-](mailto:benacer.hamza@univ-ueb.dz)

ueb.dz Maître de Conférences

« A »

Institute of urban technique management.

Department of urban technique management

Dr. Benacer Hamza

Academic year: 2024/2025



Semestre 1	
Unité d'enseignement	UE. Transversale
Matière 1	Langue 1
Coefficient	1
Crédit	1

Objectifs de l'enseignement

Maîtrise des bases de la terminologie. Lexique et étude de texte.

Connaissances préalables recommandées

Bases de la grammaire.

Contenu de la matière :**ANGLAIS ou FRANÇAIS**

Analyse grammaticale

Analyse lexicale

Etude de texte

Terminologie

Construction

Mode d'évaluation :

Examen 100%

Références bibliographiques

A définir par l'enseignant

Introduction

Axe One: exploring technical English for city planning and urbanism

Starting up

1. Reading : Urban planning,
2. Urbanism, and the role of urbanists in city planning
3. Practice of the course and relevant questions
4. Vocabulary review :
5. Defining vocabulary :
6. Grammar : connectors, gerund or infinitive form practice :
7. Speaking urban planning walkability:
8. Writing the functions of planners

Axe Two: exploring technical English for construction and public works companies

Starting up

1. Reading: Building construction Foundations
2. Exterior Materials Wood siding Shingles
3. Brick Openings
4. Arch, Post, and Lintel Windows ; Roofs
5. Construction project types include
6. Building of commercial buildings Methods used in residential construction
7. Construction of industry Review of vocabulary
8. Grammar: Articles and connectors.
9. Speaking: The profile of workers in the construction Writing: Building types and building materials

Axe Three: comment on technical, descriptive text and understanding English scientific article through urbanists and architects' works and sayings:

Starting up

1. Reading: The Perfect Home: Alain de Botton/ The architect SEAN GODSELL
Vocabulary
2. Work as a Noun Work Collocations Defining Scope
3. Test your knowledge

Bibliography

INTRODUCTION:

This instructional resource has been specifically designed for second-year undergraduate students specializing in Urban Technics Management who wish to deepen their understanding of their field in English. The material provides opportunities to develop both productive (speaking and writing) and receptive (listening and reading) language skills. Consequently, learners are encouraged to articulate their ideas, make comparisons, and express agreement or disagreement regarding the presentation of various topics.

The polycopy, structured over four lessons for a semester, follows a curriculum focused on urban and construction-related vocabulary, each lesson organized around a central theme. To foster motivation and facilitate the acquisition of profession-specific terminology and expressions, the resource incorporates insights from my teaching experience, references to relevant literature, and curated lists of questions. Additionally, it includes citations from field-specific texts and targeted grammatical exercises.

A core principle underpinning this English course is the recognition of translation practice as an effective pedagogical strategy. The approach employs a vocabulary-focused methodology, actively engaging students in learning through the systematic exploration of word classes—nouns, verbs, adjectives, and adverbs—within readings that reinforce technical vocabulary pertinent to urbanism and architecture. Vocabulary development is further supported by thematically linked texts in each unit.

Grammar exercises are designed to exemplify target structures with numerous contextualized examples. The pronunciation component addresses both phonetic features and the individual translation of key terms relevant to the subject area. Writing assignments aim to enhance students' narrative skills, emphasizing contemporary techniques for composing high-quality essays.

Given the applicability of English in both professional and personal contexts, it is my belief that this academic resource will serve as a valuable asset to students throughout their academic journey and future careers.



**AXE ONE: EXPLORING TECHNICAL ENGLISH
FOR URBANISM and CITY PLANNING**

1. Reading: Urban Planning

Warm-up Activity :

Working in pairs, discuss the questions below.

A- Describe the image below

B- What responsibilities does a city planner have ?

C- Identify two primary functions of urban planning.

1.
2.



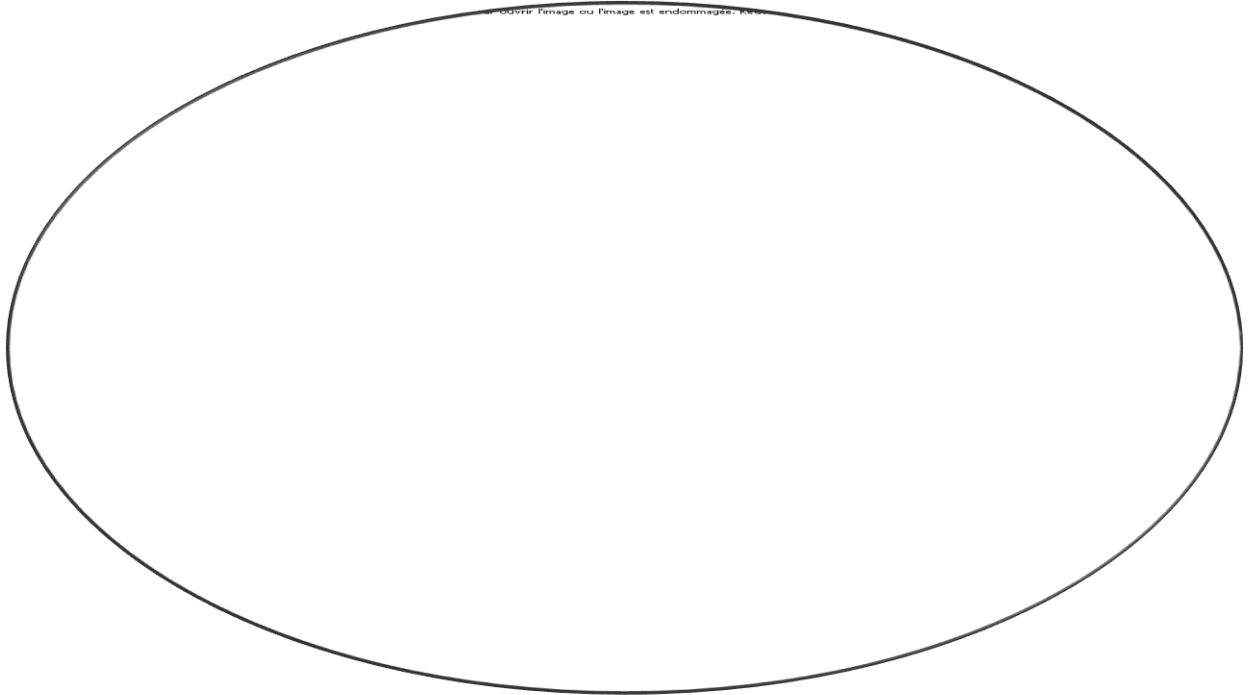
The image depicts two individuals standing and facing each other in front of a wall illustrated with a city skyline and various interconnected icons. The icons include symbols such as thumbs up and thumbs down, bar graphs, network diagrams, and location markers, all suggesting elements of urban planning, decision-making, and social interaction within a city environment. The individuals appear to be engaged in contemplation or discussion, representing collaboration or dialogue about urban development and planning.

2. Urbanism and the role of urbanists in city planning:

Urban planning constitutes a sophisticated political and technical process for the management of land utilization and the development of urban environments, including transportation infrastructure, with the objective of facilitating and ensuring methodical community and settlement expansion. This multifaceted discipline encompasses public engagement processes, policy formulation, implementation strategies, administrative oversight, architectural considerations, spatial organization, empirical investigation, analytical assessment, and strategic conceptualization.

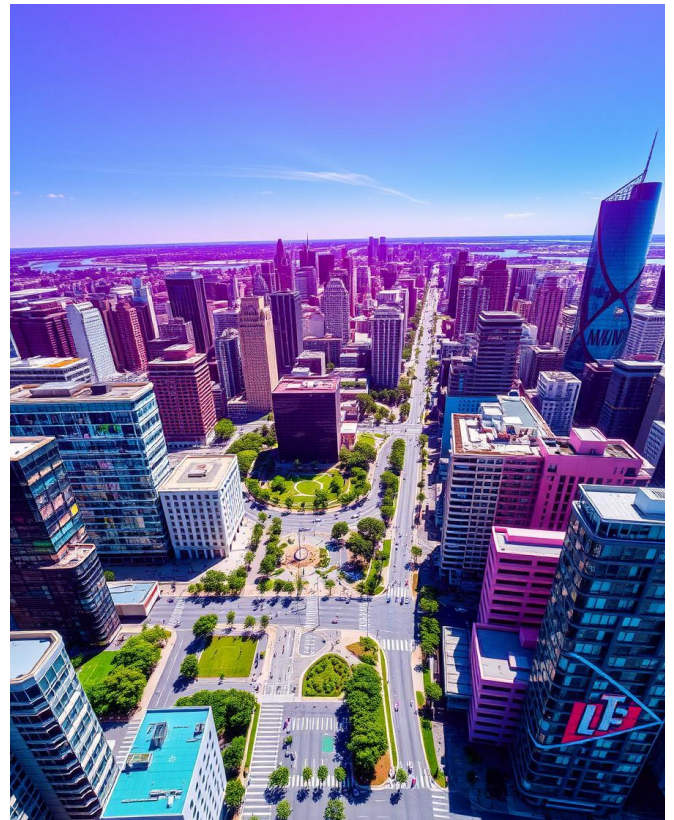
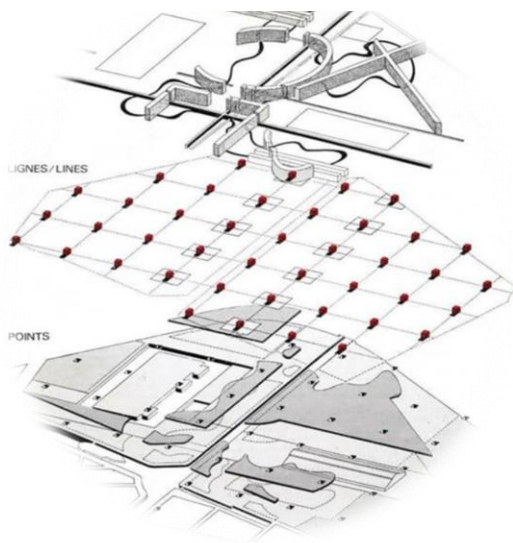
The discipline manifests through diverse planning typologies, including neighborhood-specific frameworks, comprehensive developmental schemes, incentive-based and regulatory mechanisms, strategic initiatives, and historical conservation programs. Planners frequently assume responsibility for the operationalization of adopted policies.

Contemporary urban planning emerged from the urban reform movement that developed during the mid-nineteenth century as a response to industrial metropolitan instability. Urban regeneration methodologies, applied to communities experiencing decline, have been integrated into broader urban planning frameworks. The concept of "sustainable development," which emerged in the latter twentieth century, has evolved to represent the quintessential objective of comprehensive planning endeavors.



2.1 Urbanism:

Urbanism constitutes the scholarly examination of human interactions with constructed environments, particularly urban settlements. This multidisciplinary domain integrates diverse academic fields including sociology, economics, geography, planning, architecture, and engineering. The study of urbanism encompasses the analysis of metropolitan development, design principles, and planning methodologies. This expansive field addresses numerous interconnected domains, including environmental design paradigms, architectural frameworks, transportation systems, and comprehensive urban planning strategies.



2.1.1 Interdisciplinary Elements of Urbanism



1- Examining Urban Social Mechanisms

❖ Neighborhood Networks

The role of interpersonal relationships in shaping social capital within neighborhoods, fostering trust, mutual aid, and collective identity among residents. These networks are crucial for community resilience and resource sharing.

❖ Public Spaces

Spaces that enable community interaction and civic engagement, such as parks, plazas, and community centers. These areas serve as vital venues for social gatherings, cultural events, and the strengthening of social bonds across diverse groups.

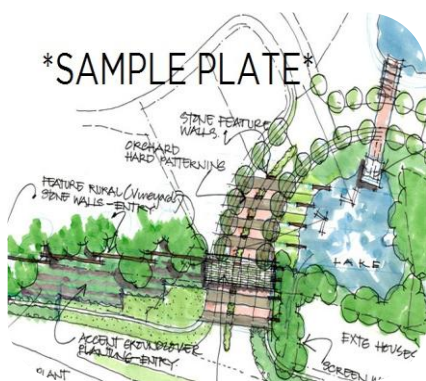
❖ Social Stratification

Patterns of inequality, segregation, and differential access to resources and opportunities that shape urban social dynamics. Understanding these stratifications helps reveal systemic barriers and informs policies aimed at fostering more inclusive cities.

2- Geographic and Planning Perspectives



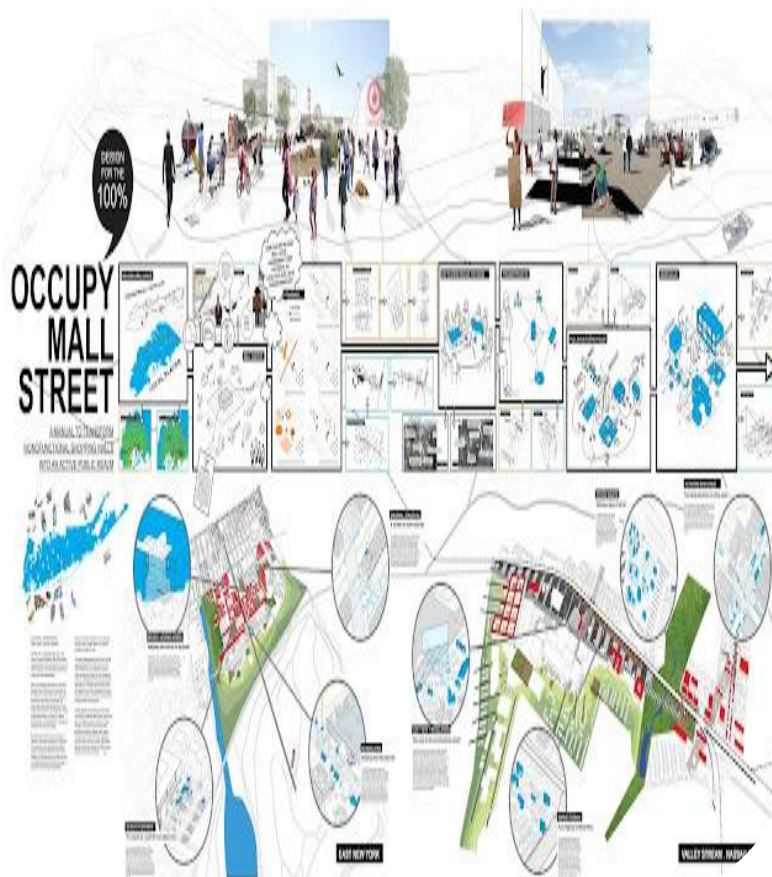
2.1.2 Core Focus Areas in Urbanism



2.2 Urbanist:

Urban planning scholars, otherwise referred to as urbanists, are concerned with the examination of the intricate interrelationships between the economic, social, and physical dimensions of metropolitan environments. The research investigates the bidirectional influence between human activity and the constructed environment, analysing how urban infrastructure shapes societal behaviour while being transformed by human interaction. Contemporary urbanist discourse encompasses a range of paradigms, including cultural, political, and environmental dimensions within the urban context.

The discipline of urbanism is experiencing significant expansion in tandem with global urbanisation trends. As population shifts continue to concentrate populations in metropolitan areas, urbanists play a crucial role in guiding future urban development trajectories. Their scholarly contributions inform policy frameworks aimed at creating more equitable, environmentally sustainable, and livable urban spaces for diverse populations.



Practice of the course and relevant inquiries:

Examine the texts thoroughly. Respond to the following inquiries.

- a. What is urban planning and urbanism?
- b. What is the primary goal of urban planning?
- c. What are the primary responsibilities of planners and urbanists?
- d. Write your idea on "Urban planning."

Vocabulary review:

Lexical Analysis of Urban Planning Discourse

Nominal Constructs:

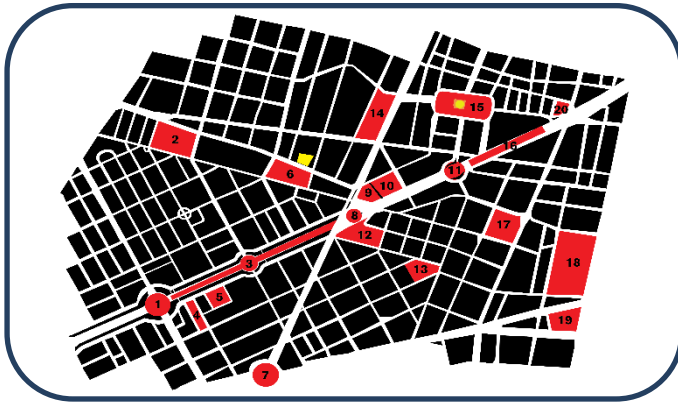
- Plan (n): A systematic arrangement of elements designed to achieve specific urban objectives
- Development (n): The process of urban growth and infrastructure expansion
- Communities (n): Social groups sharing geographical proximity and common interests
- Neighborhood (n): A localized residential district within an urban context
- Land (n): Territorial space utilized for various urban functions
- Design (n): The conceptual framework determining spatial organization
- Preservation (n): The conservation of historically or environmentally significant urban elements
- Goal (n): The intended outcome of urban planning initiatives
- Settlement (n): An established residential area with defined boundaries
- Outcome (n): The resultant effect of implemented urban policies
- Movement (n): The flow of populations, resources, or ideologies within urban contexts
- Planner (n): A professional specializing in urban spatial organization
- Research (n): Systematic investigation informing urban policy decisions
- Renewal (n): The process of revitalizing deteriorated urban areas
- Environment (n): The physical and social context within which urban development occurs

Verbal Constructs:

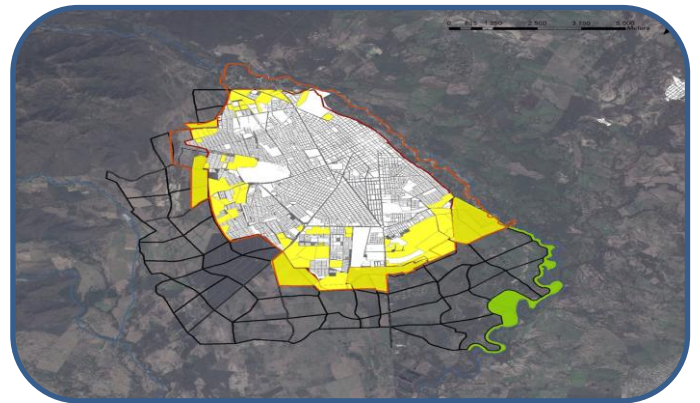
- Plan (v): To formulate systematic approaches to urban development
- Adapt (v): To modify urban structures in response to changing requirements
- Concern (v): To engage with issues affecting urban populations
- Represent (v): To symbolize or advocate for specific urban interests

Adjectival Constructs:

- Strategic (adj): Pertaining to long-term, goal-oriented urban planning
- Sustainable (adj): Characterized by ecological viability and long-term resource management



Square



Defining Vocabulary:

Urbansprawl: refers to the process by which urban areas extend outward in a largely unregulated manner, resulting in metropolitan growth that lacks effective oversight and occurs without the guidance of integrated planning strategies. This phenomenon is marked by the proliferation of built environments in a disorganized fashion, often leading to inefficient land use and the absence of coordinated infrastructural development . (Brueckner, 2000)



Dwelling: A dwelling refers to a specific place or structure that serves as the primary site of residence for individuals or households.

Subdivision:



Gated community : is a form of residential enclave distinguished by the presence of physical barriers, such as walls or fences, which restrict entry to authorized individuals only. Access to these neighborhoods is typically controlled, ensuring that only residents and approved visitors may enter the premises.



Suburb:

Infrastructure: refers to the physical and systemic organization of a city, region, or country, with particular emphasis on the networks and systems that facilitate transportation and communication. It encompasses the foundational structures and facilities—such as roads, bridges, public transit, and telecommunications networks—that support the functioning and connectivity of urban and regional environments.



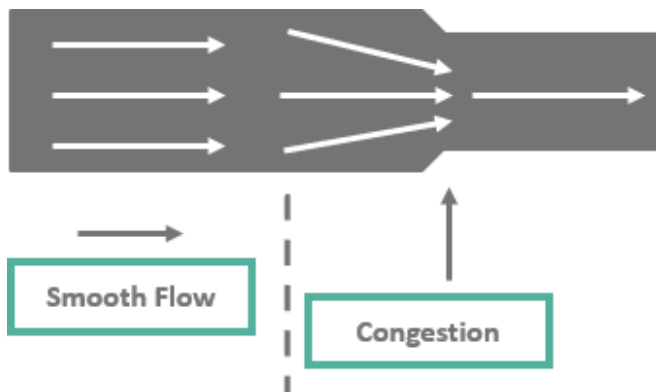
Congestion: traffic jams that are generating delays.



High-rise apartment buildings: Multi-story living spaces.



Bottleneck: Place where congestion regularly happens.



Overcrowding: A problem caused by people from the commuter belt and satellite towns moving into the city to work/live/study.



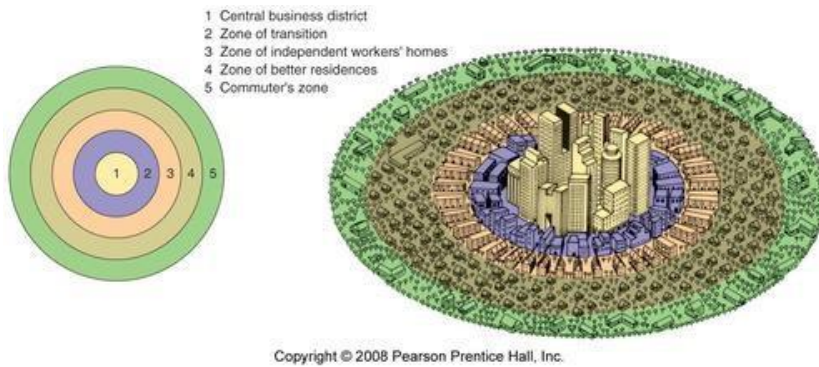
Amenities/facilities: An attractive or practical structure or location for the general public



Substandard housing: Not meeting the requirements for a residence



Commuterbelt: People who reside in a location just outside of a city and commute into it every day for work.



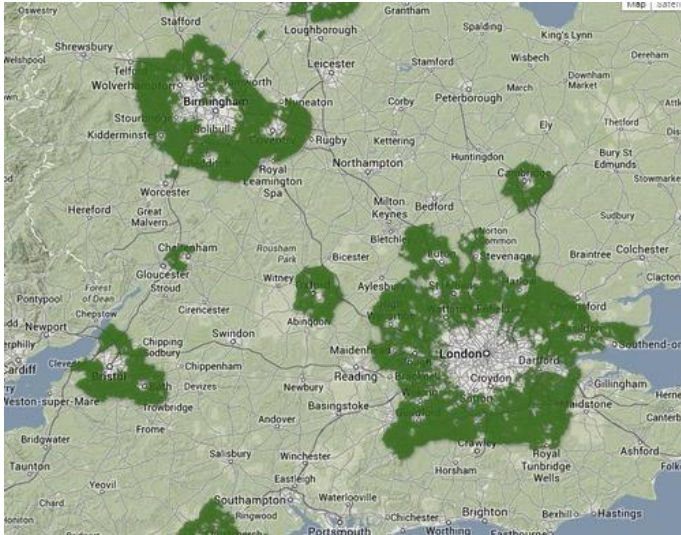
Satellite town: A town that is independent upon and next to a larger city



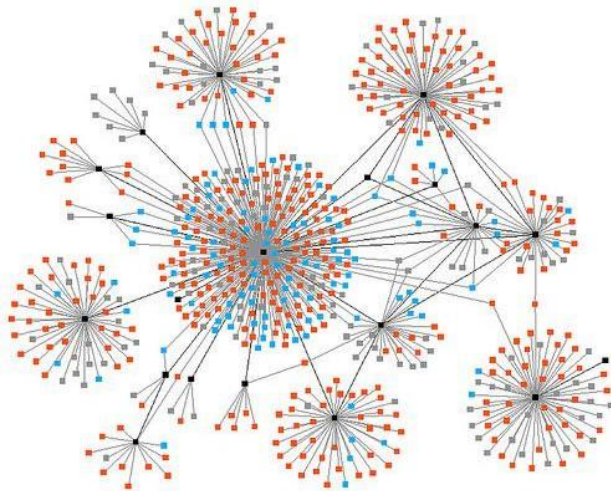
Outskirts: The areas outside of a town or city's center



Greenbelt: Open or forested spaces constructed on a city's borders



Hub: The focal point of focused action and influence



GRAMMAR:

CONNECTORS:

Instead, Infinitive form, However, Therefore, above all and gerund

1. CONNECTORS:

These words serve as connectors between positive and negative statements. They are:

Whereas, Furthermore, even so, instead, above all, however, therefore, then, so, such as, firstly and because of this.

For instance:

Firstly, I made the decision to expand my vocabulary in order to get better at speaking and listening.

PRACTICE:

a) Use your own vocabulary to translate the following connectors above all

from my point of view

such as

because of this

furthermore

then

even so

however

therefore

firstly,

instead

whereas

a) Mark the most appropriate connector in this text with a circle.

Customer service and retention

Firstly, / instead Architects and their clients collaborate closely. They meet with their clients multiple times before creating plans in order to understand their goals, financial constraints, and any particular project requirements.

Therefore, / firstly Architects collaborate with other experts in their field, such as / even so engineers, landscape architects, urban planners, construction managers, and interior designers.

While / however they deal with customers and professionals directly, the construction workers continue doing their work in the site assigned.

From my point of view / above all Architects need to have outstanding communication abilities, both in writing and speaking.

2.-Infinitive form and gerund

In grammar structure, these forms relate to subjects, objects, or verb complements.

Admit, advise, avoid, can't help, can't stand, consider, dislike, enjoy, feel like, finish, go on, keep, look forward to, recommend, remember, suggest, and understand are verbs that use the gerund form.

Begin, continue, hate, intend, like, love, prefer, start, stop are examples of verbs that use gerunds or infinitive forms.

Afford, agree, appear, arrange, ask, care, decide, expect, fail, forget, hope, learn, manage, mean, offer, plan, prepare, promise, refuse, remember, seem, want, wish are infinitive verbs. For instance:

- a) Architects suggest organizing the new building construction.
- b) They intend to create contemporary buildings. They intend to create contemporary buildings.
- c) Landscape architects refused to work with those architectural firms.

PRATCTICE

Use the verb's gerund ("-ing") or infinitive (to...) form to fill in each space. For

instance, I love..... intricate workings, designs, and specifications.

(produce)

1. They are not allowed. tender presentations and applications. (prepare)
2. She was unable. with contractors and other experts. (negotiate)
3. We enjoy..... up contract tender documents. (draw)
4. He expects people..... difficulties and problems that come up during building. (resolve)
5. My acquaintance advised me that the project's environmental impact is controlled. (ensure)

SPEAKING: walkability/Urban Planing

Talk about it in pairs. How do you see walkability in urban planning? Walking represents an appropriation of urban space for daily life.

Walking is an example of how urban space is appropriated for everyday use. In an urban setting, walkability should be efficient, safe, and convenient.

People may walk to places like parks, stores, restaurants, museums, and more for enjoyment, recreation, and business.

Walkability ought to be a key consideration. **WRITING**

:

Write five sentences describing planners' roles.



**AxeTwoExploringTECHNICALENGLISHFOR
CONSTRUCTION AND PUBLIC COMPANIES**

Warm – up:

In pairs, talk about the following queries.

- a) What is a building under construction?
- b) What are the two main characteristics of a building's construction?

Reading: Construction of buildings:

Construction of Buildings:



Construction is the process of creating or putting together infrastructure in the domains of construction and civil engineering. Large-scale building is a human multitasking achievement rather than a singular endeavor. A construction manager, design engineer, construction engineer, or project architect frequently supervises and manages the construction project.

Effective planning is crucial to a project's successful completion. When designing and implementing the infrastructure in question, consideration must be given to the project's environmental impact, efficient scheduling, budgeting, construction site safety, building material availability, logistics, public inconvenience from construction delays and bidding, etc.

When describing a structure to someone, how many times have you ended yourself adding, "And it has one of those curly thingamajigs under the eave"? The purpose of this reading is to empower you as a developer and make you more comfortable with building terminology.

Foundations:

Basement is implied by the excavation of a foundation. It raises the house's first floor above ground level. Water is diverted away from the structure by a water table located at ground level.



ExteriorMaterials:

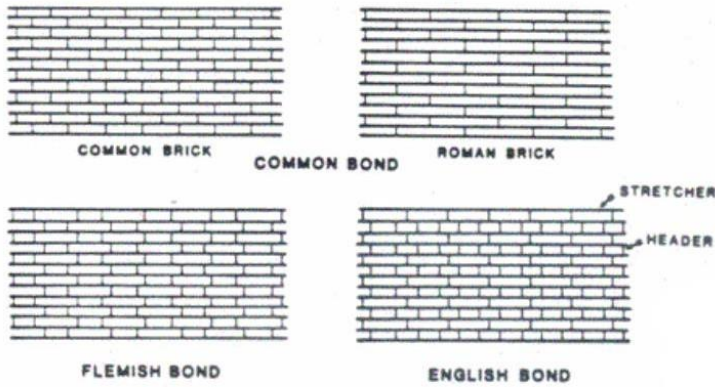
Woodsiding:



At the beginning of the century, wood siding—now frequently composed of different materials—covered a large number of homes. Clapboard and board and batten are the two methods used to apply siding:

Brick:

A structure's look may be significantly impacted by both the size and the method of bricklaying. Keep in mind that Roman bricks are longer than regular ones. Frank Lloyd Wright like it due of its focus on the horizontal.



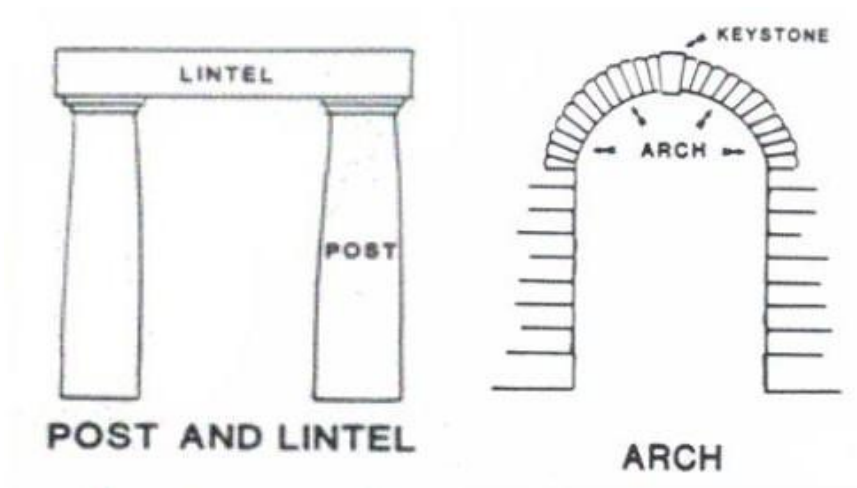
Here's an example of brick used in a decorative manner, but also as a guide to the building's structure:



Openings:

Post&Lintel and Arch:

Doors fall into two categories:

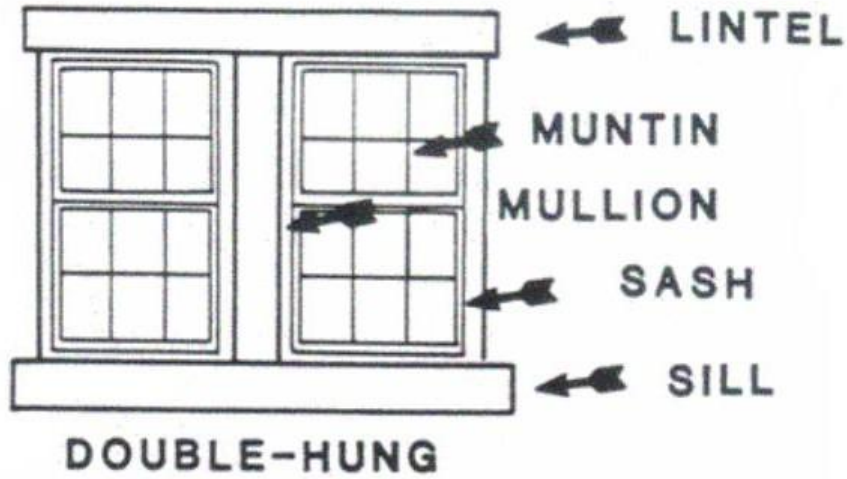


Post and lintel openings have been around for a while...



Windows:

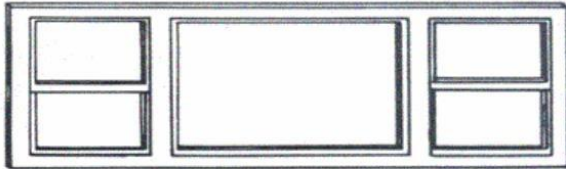
Double-hung windows are the best known. They can be plain plate glass or have panes. Wright called them 'guillotine windows'.



Casement windows swing either out or in. These were Wright's preferred windows for the Prairie style. He generally had them fabricated in art glass.



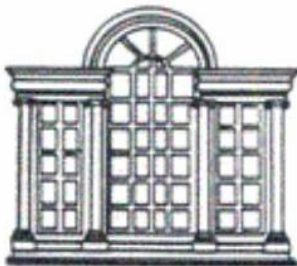
In order to provide both light and ventilation, the Chicago window was first used in the Chicago School of Architecture. The side windows were often double-hung and had the ability to open, but the center plate glass pane was fixed.



CHICAGO WINDOW



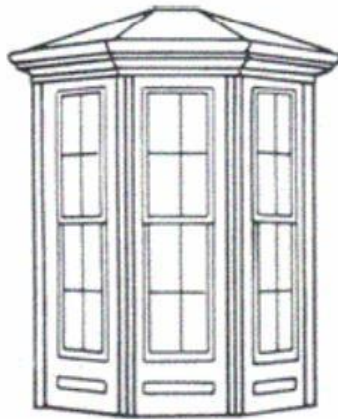
Palladian – a three part window in three sections with the center section being taller and arched. Named for Italian Renaissance architect Andreas Palladio, designer of many villas.



PALLADIAN



Bay or oriel. Bay windows usually start at the ground or extends from the foundation. Think of an Oriel as a decorative appendage.



BAY WINDOW



ORIEL

Roofs:

Sheds are a very old and simple style of roof.



SHED

Gables are associated with Victorian style.



GABLE

Gambrel look like barns or Dutch colonial.



GAMBREL

Hipped roofs were Wright's choice for Prairie style because of their straight line against the sky.



HIPPED



Types of construction projects:

There are generally four categories of construction:

1. Construction of residential buildings
2. Construction of industrial facilities
3. Construction of Commercial Buildings
4. Construction of heavy civil infrastructure

A different team is needed for each kind of construction project in order to plan, design, build, and maintain the project.

Construction of buildings The process of giving real estate more structure is called building construction. Small modifications, like adding a room or remodeling a bathroom, make up the great bulk of building construction tasks. The property owner frequently serves as the project's design team, paymaster, and worker. However, there are some components that all building construction projects have in common, such as design, budget, estimation, and legal issues. Many projects of all sizes end in unfavorable outcomes, such as structural collapse, cost overruns, and/or lawsuits. To guarantee a successful finish, experts in the industry create thorough blueprints and exercise close supervision throughout the project.

Commercial building construction: is purchased either publicly or privately using a variety of delivery methods, such as design-build bridging, construction management-at-risk, management contracting, hard bid, negotiated pricing, cost estimation, and design-build.

Residential construction practices: Resources and technologies must adhere to the rules and best practices set out by the local building authority. The building materials chosen are often determined by the resources that are easily accessible in the location (e.g. brick versus stone, versus timber). The cost of building a house can vary significantly depending on a number of factors, including site conditions, local rules, economies of scale (building custom-designed homes is always more expensive), and the availability of trained craftspeople. Again, careful planning is required since residential construction—like all other forms of construction—can produce a lot of trash.

In the US, wood-framed construction is the most often used technique for building homes. The implementation of efficiency rules in recent years has led to the emergence of new

building technologies and techniques. University construction management departments are at the forefront of the most recent building techniques designed to increase productivity, enhance performance, and cut down on waste.

Industrial construction: Despite making up a very modest portion of the overall building sector, industrial construction remains a crucial component. Large, for-profit industrial businesses typically own these projects. These companies operate in a variety of industries, including manufacturing, power generation, metallurgy and material handling, pharmaceutical, chemical, infrastructure, and power transmission and distribution. These industries' procedures need for extremely specific knowledge of design, construction, cost estimation, and planning.

This kind of construction, which is frequently carried out by large construction organizations, needs a team of people to ensure a successful project, just as building and heavy/highway construction. Building or assembling infrastructure is referred to as construction in the domains of architecture and civil engineering. Large-scale building is a human multitasking achievement rather than a singular endeavor.

The work is often overseen by a construction manager, design engineer, construction engineer, or project architect, and managed by a project manager. Effective planning is crucial to a project's successful completion. The environmental impact of the project, effective scheduling, budgeting, construction site safety, building material availability, logistics, public inconvenience from construction delays and bidding, etc., must all be taken into account when designing and implementing the infrastructure in question.

1.-Choose one topic and then explain it.

- a) Residential Building construction.....
- b) Industrial construction.....
- c) Commercial Building construction
- d) Heavy Civil construction.....

2.-Consider the following factors:

- a) Definition

b) Characteristics

c) Mainfunction

Examples:

Translatethistext.

Many projects of all sizes end in unfavorable outcomes, such structural collapse, cost overruns, and/or lawsuits; experts in the area create thorough plans and exercise close supervision throughout the project to guarantee a successful ending.

Vocabularyreview:

Assessingtheconstructionof buildings

Field,n

Multitasking,n

Schedule,n

Budget,n

Residential,adj

Commercial,adj

Industrial,adj

Heavy, adj

Financial,adj

Regulation,n

Trade,n

Execution,n

Infrastructure,n

Collapse,n

Oversight,n

Factories,n

Release,v

Wood,n

Stone,n

Brick,n

GrammarConnectors:

Because,and,so,but,articles:noarticle,the,an,a,

1.Connectors:and,so, because,or, but.

Thesearealso called“linking words”:

AND = For adding

SO=Forsequences

BECAUSE=Forexplaining

BUT = For contrasting

OR=Forchoosing

Practice:

Fillthegapswith

and,but, becauseor so.

1.-Architectsmustfollowbuildingcodes,fireregulations,zoninglaws city ordinanceswhencreatingtheirplans.

2.-Forpublicbuildings,architectsmustbeawareofdisabledaccesslaws.....they mustalways consultallcodes.

3.-Somestatesrequirearchitectstoenrollincontinuingeducationcoursestokeeptheir licensetorequireattendanceatseminars,workshopsandconferencetomaintaina license.

4.- Architects must be in on the latest energy-efficient products, building styles and must research the area they are building to ensure their design matches current building structures.

5.- Since these laws change regularly, architects need to stay up-to-date on policy, zoning and regulation changes,..... they consider the clients' money.

Mixedarticles:

A=consonantsounds AN

= vowel sounds THE=

singular/plural

NOARTICLE=generalization **Practice:**

Choosethecorrectarticle.

1.- architects design residential and commercial structures, of course, but their responsibilities don't stop there.

a)Ab) AN c)THEd) NO ARTICLE

2.- responsible architect must also think about a building's style, safety and sustainabilityto ensure it meets the needs of its occupants as well as the requirements of state and federal regulators.

a)Ab) AN c)THEd) NO ARTICLE

3.....meaningfularchitectsworkwithbothgovernmentagenciesandprivate clients.

a)Ab) AN c)THEd) NO ARTICLE

4.- According to the U.S. Department of Labor Statistics, architects earned an annual mean income of \$72,550 for 2010.

a)Ab) AN c)THEd) NO ARTICLE

Speaking:

The qualities of the construction crew.

Analyze these bubbles to explain the construction site worker profile.

Every site where a building or other structure is being constructed has construction workers.

Construction laborers help build bridges, new homes, highways, and stores. Construction laborers either work as generalists or specialize.

Laborers are responsible for building site preparation and cleaning.

A large number of workers set up and arrange scaffolding, as well as unload tools and supplies brought to a building site.

A large number of construction workers utilize tools like stucco spray guns and cement preparation machines.

A large number of workers support masons, carpenters, and other building specialists. There are workers who install and fix traffic lights.

Writing:

Building types and building materials

Write two sentences using the words below. **Building**

types:

SCHOOLS.....

COMMERCIAL BUILDINGS (STORES).....

OFFICE BUILDINGS.....

FACTORIES.....

PUBLIC BUILDINGS.....

HOUSES.....

Building materials:

WOOD.....

STONE

BRICK



METAL.....

CONCRETE

GLASS.....

**AxeThreeCommentonTechnical,Descriptivetextand
understanding English scientific article through
URBANISTS and ARCHITECTS' WORKS AND
SAYINGS:**

Reading:

The Perfect Home: Alain de Botton:

Alain discusses the function of building design in daily life in this debate, and also how structures may impact our emotions and overall health.

Can beautiful houses make us happy?

Our moods may be greatly influenced by beauty. In reality, when we describe a chair or a house as lovely, we are expressing our admiration for the lifestyle it suggests. We would enjoy who it is if it were suddenly transformed into a human because of its appealing attitude. Unfortunately, we are quite susceptible to the coded messages that emerge from our surroundings. It would be nice if we could maintain a similar mood wherever we were to be, whether it be in a palace or a cheap hotel (imagine the money we would save on renovating our homes). This clarifies why we have such strong emotions about issues of building and interior design: these things shape who we are.

Naturally, architecture cannot always make us happy on its own. Observe the disappointments that might occur even in the most picturesque environments. One may argue that architecture evokes a feeling in us that we might not be able to absorb because we are too inwardly conflicted. Its efficacy may be likened to the weather: a bright day can significantly alter our mood, and individuals may be prepared to make significant sacrifices in order to be close to a sunny environment.

However, no amount of blue sky or even the best building can make us happy when we are dealing with enough troubles (romantic or professional confusions, for example). Because architecture lacks the clear benefits of adequate food supplies and clean drinking water, it is difficult to make it a political priority. Nevertheless, it is still essential.

Why are we drawn to old-fashioned buildings? What is it about modern architecture that people don't like?

We can learn a lot about people's needs and desires from their taste. While individuals whose homes are white and barren are using their decorating scheme to ward off thoughts of chaos and disorder, people who adorn their homes with dolls and teddies are frequently fleeing from something too harsh and cruel in their life. Why, therefore, do so many of us in the UK have a fondness for the past? This does not indicate that we are genuinely backward, rural people.

Instead, we yearn for a more rustic, rural past because we are so far off from living such a life now. Concrete and high-tech gadgets are things we feel we already have enough of, and we

wish to escape them. The reason why so many individuals despise modern architecture is that it doesn't assist them in rebalancing their mental states. It appears to give them more of what they already have too much of.

INTHEMINDOFSEANGODSELL:

The following is an excerpt from—In the Mind of the Architect (television series)

Sean Godsell In fact, Victorian homes are dim. They're wretched places. It simply isn't effective. It's chilly. It's gloomy. It's dank. It uses tools and methods that date back a century. Why make a duplicate of it?

Narrator: If we believe in them, architects can change our lives. Structures dictate our thoughts and actions. Therefore, how do you determine what a building should feel and look like, and are architects required to concur with you? not In the homes they create for themselves.

Sean Godsell: If you don't feel good about yourself, you probably don't like the building because it makes you face yourself. In that sense, there is nowhere to hide.

Godsell, Anne-Marie: Accepting that you are in a highly public area is essential to living here. It's embracing the reality that your spouse works in a field that requires individual experimentation. It's been called a "fish bowl," and I recall that on one of the first nights we stayed here, I realized that the front bedroom had no blinds, so I would have to change and go into the cupboard. I did so, and after a short while, I became accustomed to changing in the cupboard.

Sean Godsell: One day, when I was exercising on the nature strip, a man, his wife, and his adult daughter were saying "good morning" as they passed me. I replied, "Good morning," and they said, "So how is it up in Auschwitz today?" "Let's feed the animals up in the zoo!" has been shouted by groups of people standing out in the street in the middle of the night.

Godsell, Anne-Marie: The lack of apparent privacy is probably the most offensive thing to most people, but I don't find it confrontational since I'm accustomed to the experimenting and have gotten insensitive to things that most people would find extremely offensive. It's a really caring and cozy home for me.

Sean Godsell The building's layout is split, which is a strategy used in Asian planning. There is no room for corridors. There is only one place that can be partitioned in a number of different ways.

It is both a practical and a symbolic gesture, but it imposes a socialization that Australia's culture must cope with. It makes everyone in the family more tolerant. As a result, bedrooms in this building are linked, much as in a traditional Japanese home, which enforces seclusion. If you can have glass, why not have it in the twenty-first century? If you can obtain light, why not have it, and if you can get air, why not have it? Why do they wish to halt advancement? Why do they feel so anxious? I'm not sure. Because of it, we are a generation of designers with fewer combatants.

Vocabulary:

miserable— dank— devices— reproduce— trust— transform— behave— forces— confront— “in that sense”— public— domain— private— referred— incredibly— aware— cupboard— experimentation— impervious— affronting— lack— perceived— comforting— nurturing — divided — devoid — permutations — combinations — symbolic — gesture — pragmatic— socialisation (socialization)— tolerance— inter-connected— respect— progress— nervous— generation.



Semi-detached housing



Detached House



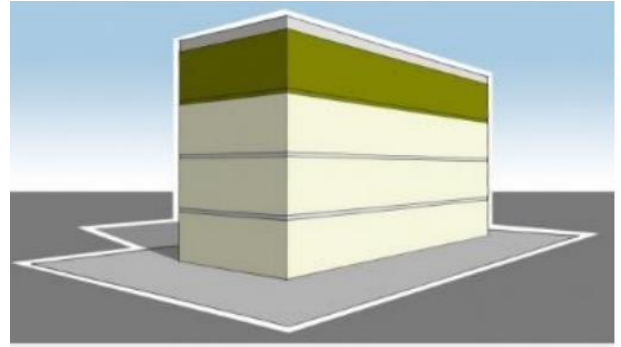
Flat / Apartment



Block of flats



Skyscraper



Floor

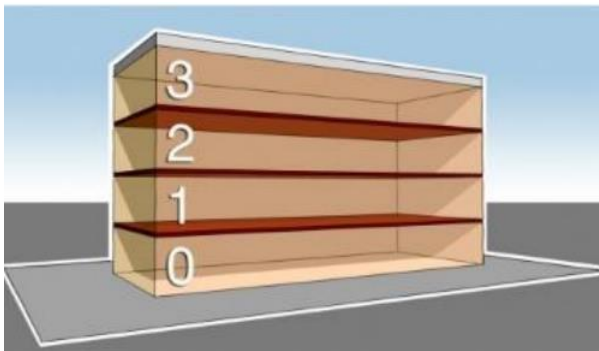
role-affect-mood-huge-altering-suggesting-attitude-attracted-convenient-remain-cheap-
 redecorate-unfortunately-vulnerable-coded-emanate-passionate-matters-contented-
 dissatisfactions-unfold-idyllic- surroundings-internally-troubled-effectiveness-substantially-
 stateofmind-willing-sacrifices-climate-undertheweight-sufficient-romantic-professional-
 confusions (complications)- amount-political-priority-unambiguous-advantages-old -
 fashioned -vital-taste-missing-decorate-escaping-overly-harsh-cruel-empty-scheme-keep at
 bay-chaos-disorder-actually-rural-backward-nostalgic-precisely-rustic-technology-rebalance -
 psyches -disagree -relationship.



House



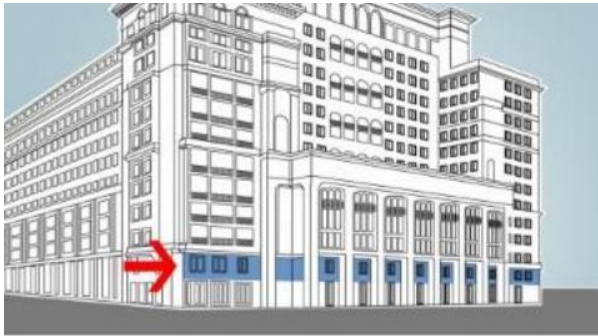
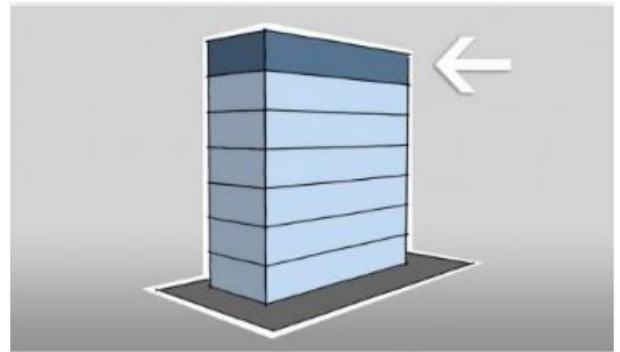
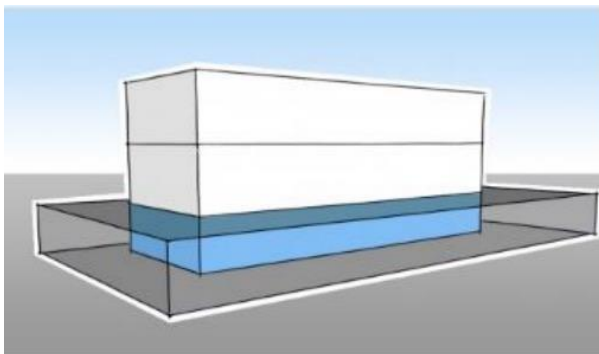
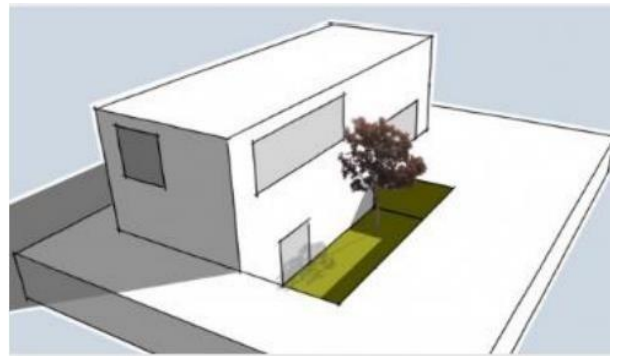
Terraced house



Storey



Ground floor

**Mezzanine****Top floor****Basement****Areaway**

Work as a Noun:

'WORK' is the most crucial term in the design and construction industry. Let's investigate why. We will study a little bit about the term "WORK" as a noun on projects in this mini-lesson.

Work Collocations: In contract papers, the legal term "work" is used. It may also refer to a wide range of distinct components of a building project. These are a few typical verbs that go well with nouns. These collocations are powerful. This indicates that certain pairings are highly prevalent and practical. This is how they collocate: 'VERB '+ WORK.

1 . Perform work 2 . coordinate work 3 . begin work 4 . complete work 5 . include work 6 . exclude work 7 . schedule work 8 . install work

Examples:

On time, subcontractors completed the job.

A tower crane facilitates more efficient work for the contractor. To prevent disputes, the subcontractors' work must be coordinated.

The contractor started working as soon as the owner gave him the green light.

The general contractor has to do their work within the allocated budget. The street's storm sewer work is covered in the contract agreements. Owner-performed work is not included in the contractor's proposal. The foundation work was planned for next week by the project manager. Before the electrical contractor installed their work, the plumbing contractor did so.

Defining Scope:

The scope of work is specified in contract contracts for all project participants. The precise portion or portions of a project that businesses must work on, or are accountable for, are known as the scope of work. Contracts specify what work is covered (within the scope of work) and what is not (outside the scope of work). 'Work' is frequently used in conjunction with other terms to refer to the many types of work that are done on a project. These collocations are between nouns and nouns.

Work can be defined according to trade, discipline or specialty:

- Electrical work
- Utility work
- Mechanical work
- Demolition work
- Civil work
- Structural work

Work can be generally discussed according to material:

- Concrete work
- Wood work
- Sheet metal work
- Masonry work

Another way to categorize work is by location:

- Interior work
- Underground work
- Exterior work
- Site work

And the word 'work' can work as an adjective. Here are some expressions that are used to describe a project process.

Work progress

Work load

Work flow

Work day

Work hours

Here are the other important keywords and expressions from the lesson:

Be responsible for (something) Include Exclude Specific perform coordinate begin complete
include exclude schedule install

Test your knowledge:

1. Using ten new terms from this chapter's vocabulary, construct ten sentences:

2. Define architecture in your own words.

3. What role does architecture play? (What is it used for?)

4. Use the terms abstract, geometric, implement, and organic to construct sentences.

5. Multiple choice: select the most appropriate response.

1. The proprietor changed. More steel and concrete must be supplied by the contractor. The scope of work includes these materials.

A. carried out B. within C. outside D. finished E. installing

2. Contract documents (specifications and drawings) the project's scope.

A. plan B. schedule C. install D. specify E. supply

3. Typically, plumbing and piping fall within the purview of an electrical contractor.

A. carried out C. outside D. omitted B. inside C. E. set up

4. When a consultant or contractor is in charge of anything, it indicates that it is within their area of expertise.

All of the following: A. inside B. inside C. included in D. part of E.

5. With work, which verb does not collocate?

A. carry out B. execute C. specify D. install E. omit

6. Schedule is a noun. Contractors make a schedule. Schedule is also a verb. To schedule something most closely means:

A. write a calendar for a project B. perform a scope of work C. define a scope of work D. set a specific time to perform work E. coordinate the specific scopes of work

Bibliography:

- AbbyMarks-Beale, (2001), Ten days to faster reading, Warner Books.
- Advanced Grammar in use, a reference and practice book for advanced learners of English chez Cambridge University Press.
- Architect Career Profile | Job Description, Salary, and Growth | Truity. (2017). Truity.com. Retrieved 21 February 2018, from <http://www.truity.com/career-profile/architect>
- Architect Job Description, Career as an Architect, Salary, Employment - Definition and Nature of the Work, Education and Training Requirements, Getting the Job. (2018). Careers.stateuniversity.com.
- Retrieved 21 February 2018, from <http://careers.stateuniversity.com/pages/286/Architect.html>
- Architect job profile | Prospects.ac.uk. (2018). Prospects.ac.uk. Retrieved 21 February 2018, from http://www.prospects.ac.uk/architect_job_description.htm
- Architect: job description. (2018). TARGET jobs. Retrieved 19 February 2018, from <https://targetjobs.co.uk/careers-advice/job-descriptions/277573-architect-job-description>
- Architecture. (2018). En.wikipedia.org. Retrieved 2 February 2018, from <https://en.wikipedia.org/wiki/Architecture>
- Architecture CADD Design-3D architectural design. (2018). Archcad design.com. Retrieved 11 February 2018, from <http://www.archcad-design.com/>
- Art. (2018). En.wikipedia.org. Retrieved 1 February 2018, from <https://en.wikipedia.org/wiki/Art>
- Bescherelle 6000 verbes anglais et leurs composés, formes et emplois chez Hatier.
- Construction. (2018). En.wikipedia.org. Retrieved 5 February 2018, from <https://en.wikipedia.org/wiki/Construction>
- English Grammar in use, a self-study reference and practice book for intermediate students of English chez Cambridge University press.
- English workbook-English for Architects and Interior Designers-Edited by Choi Wang-do
- General Grammar. (2017). Autoenglish.org. Retrieved 3 February 2018, from <http://www.autoenglish.org/generalgrammar.htm>
- "It's" + Adjective + Infinitive | Grammar Quizzes. (2017). Grammarquizzes.com. Retrieved 17 February 2018, from <http://www.grammar-quizzes.com/infinitive4.htm>
- Journal Ease Exercices, 120 mots pour assimiler le vocabulaire d'un journal anglais ou américain, Chez Bréal. Stierlin Henri, (1996), Islam: les origines de Bagdad à Cordoue, Tome 1, édition
- Phonetic symbols for English. (2008). Phon.ucl.ac.uk. Retrieved 21 February 2018, from <http://www.phon.ucl.ac.uk/home/wells/phoneticsymbolsforenglish.htm>
- Urban planning. (2018). En.wikipedia.org. Retrieved 1 February 2018, from https://en.wikipedia.org/wiki/Urban_planning